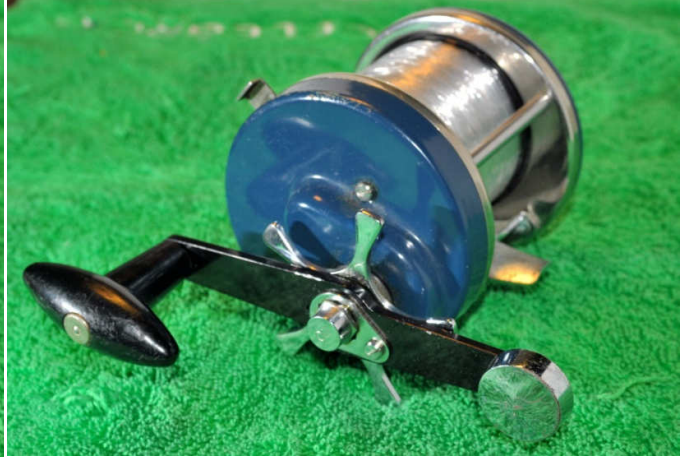
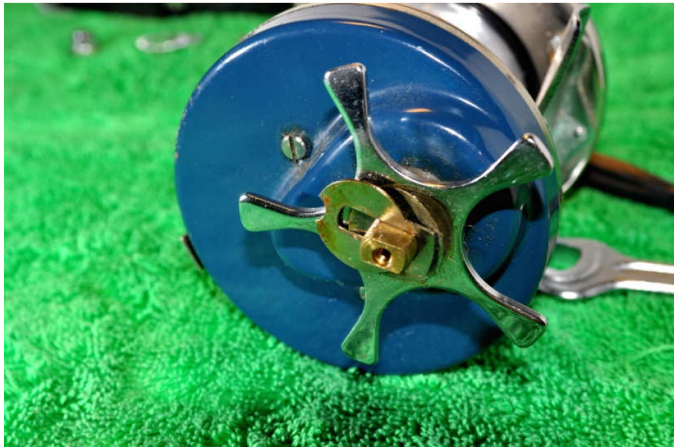
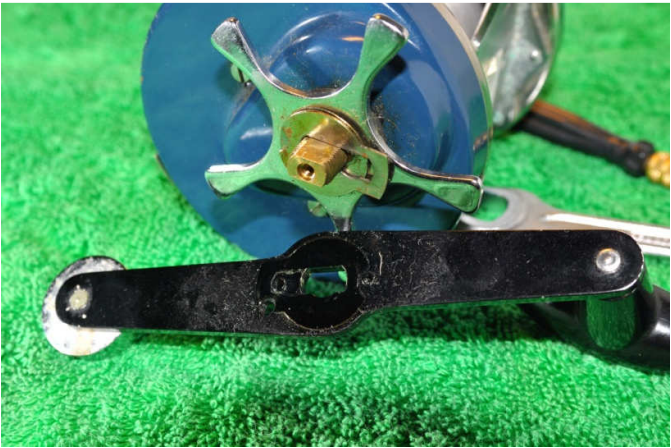


Ambassadeur 8500 service guide



This is a single speed reel and so servicing is pretty straight forward. Mechanically this reel seemed fine although the drag was very sticky and the gears felt as if they needed a lube.



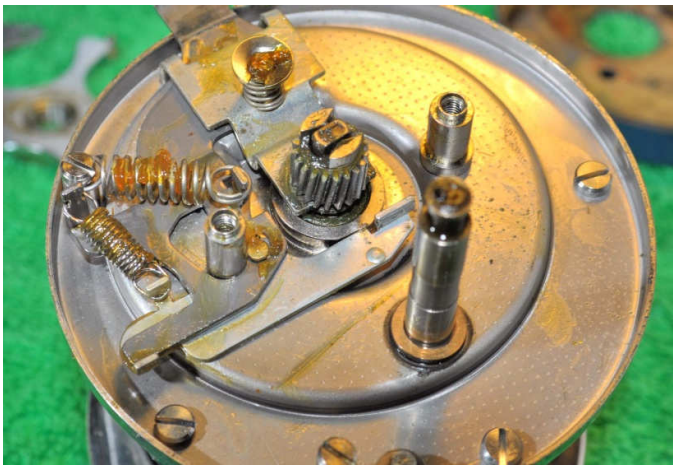
Start by removing the handle nut lock plate screw, the handle nut lock plate, and the handle nut. Remove the handle. Note the locking washer under the handle. This washer needs to be pushed to one side before it can be removed. Note there is another washer under this locking washer.



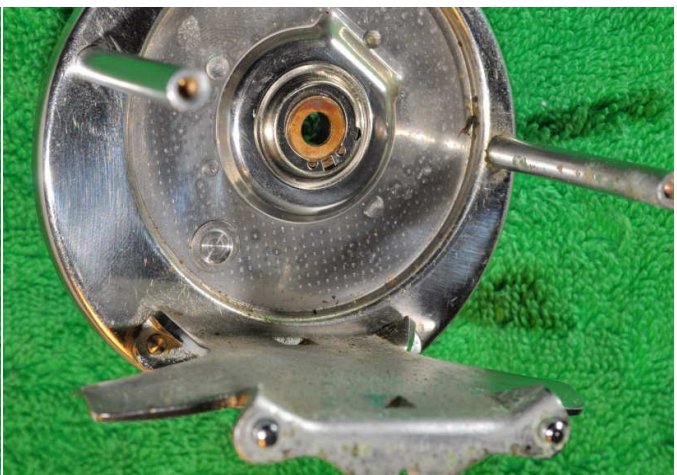
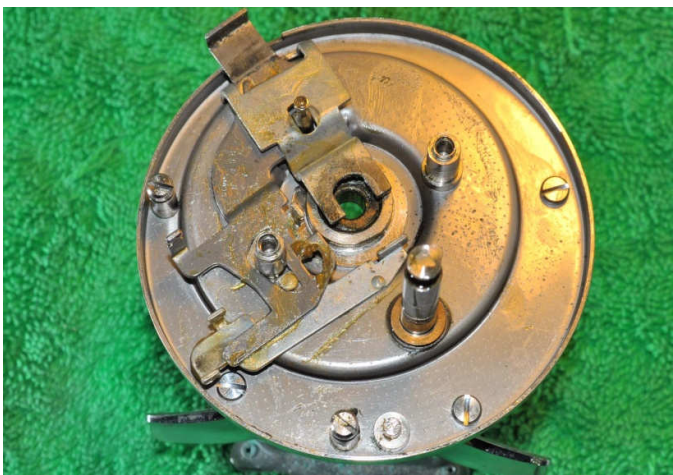
Before opening up the right side plate it is a good idea to remove the left side plate (held in place with three thumb nuts) and the spool from the frame. Remove the star drag and then remove the two bridge screws on the side plate. Remove the side plate.



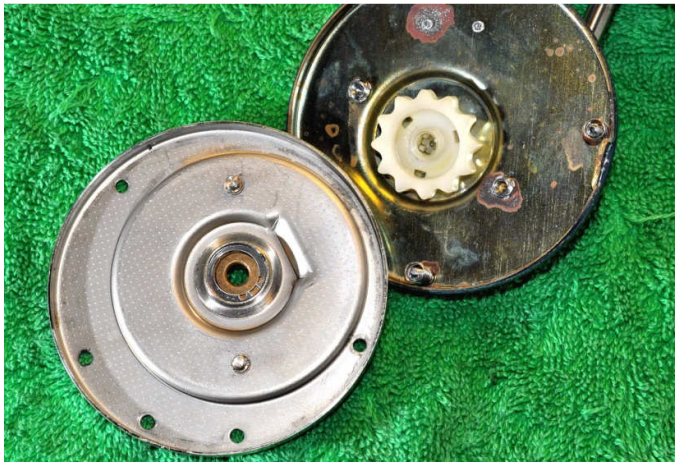
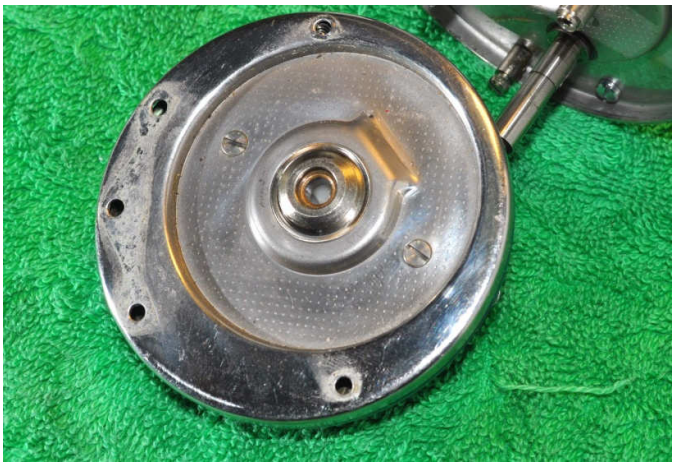
Lift off the whole gear assembly and anti reverse pawl and then separate it out. In the photo bottom left is bottom of the assembly and top right is top of the assembly. Note that there is a shim that sits under this assembly-it is still on the brake plate in the photos below.



Remove the pinion yoke lock and the pinion yoke spring-take care as the spring is compressed and you need to make sure it doesn't fly off. Remove the pinion gear and the press arm spring (stronger spring) and the clutch spring (weaker spring).



Remove the free spool press arm, free spool clutch and the pinion yoke. Access to the bushing is on the other side of the side plate. Remove the circlip and the bushing. Giving the bushing a good clean and then flood with oil.



To access the bushing on the left side plate you need to undo the two screws on the inner plate-these are held captive in the side plate. The bushing on this side is also held in place with a circlip-again clean thoroughly and then flood with oil.

Before reassembling the reel give everything a thorough clean. Remember on reassembly to use a light coat of grease on the friction surfaces-oil goes on the gear post, the bushings and spool shaft.



Replace the free spool press arm, free spool clutch and the pinion yoke in the frame applying a light coat of grease to the friction surfaces.



Replace the pinion yoke spring and the pinion yoke lock. Replace the press arm spring and the clutch spring. Add some oil to the gear shaft and then replace on the side plate-don't forget the anti reverse pawl.

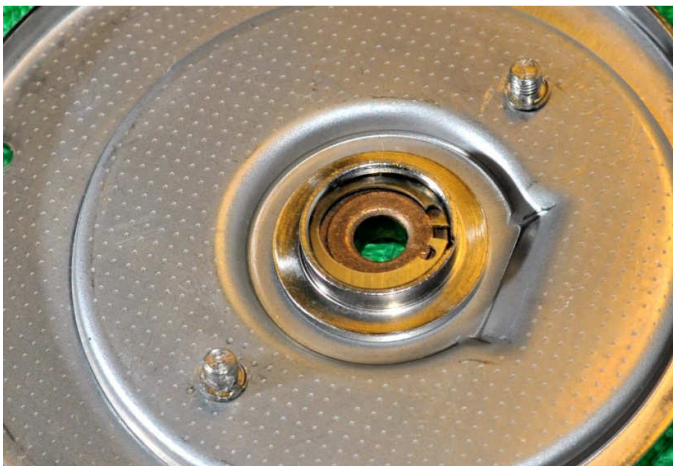


Replace the pinion gear and the main gear assembly-remember to put some grease on the main shaft where the gear contacts. Rebuild the gear stack in the correct sequence (check the disassembled photo if unsure). Replace the side plate lining up the notch on the drive shaft bearing casing (black plastic part) with the notch in the side plate. Replace the two bridge screws.

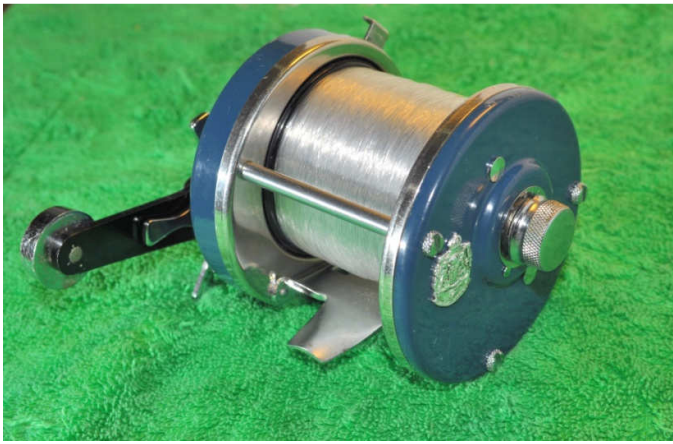
After lubricating the bushing, replace it in the side plate and fix in place with the circlip.



Add some oil to the felt washer underneath the star drag. Replace the star drag and the washer and locking washer. Replace the handle, handle nut, handle nut lock plate, and the handle nut lock plate screw.



Lubricate the bushing on the left side plate with oil as well as the spool shaft where it contacts the bushings.



Replace the spool in the frame and then replace the left side plate ensuring that the three thumb nuts are tight.

©Tim Parratt 2010